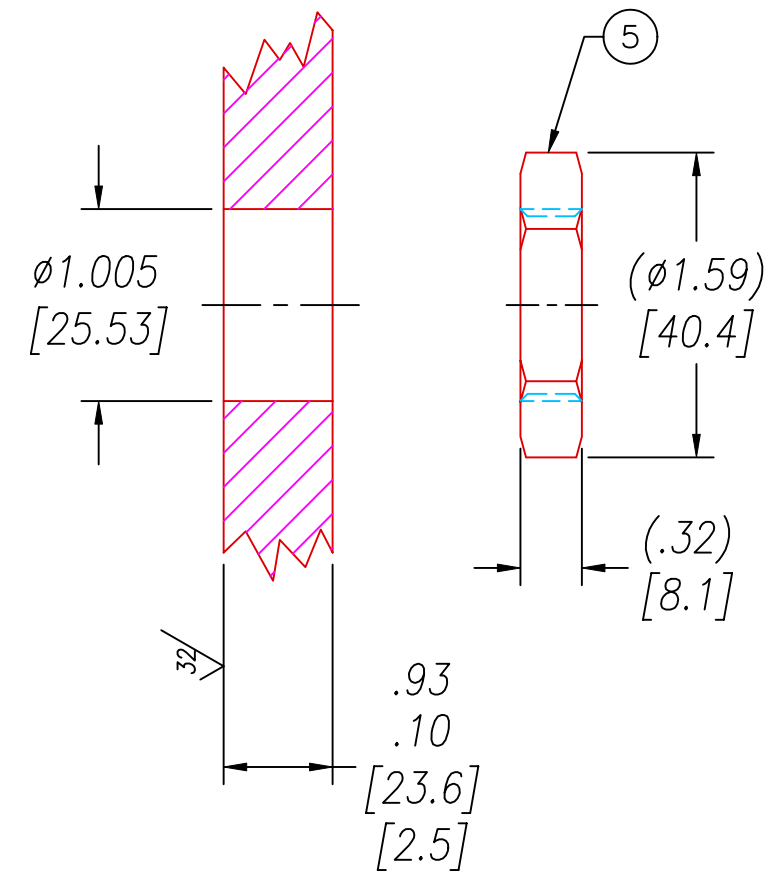


VS15L INSTALLATION PORT



NOTES:

1. HE LEAK TEST @1 ATM. 10×10^{-7} CC/S OR LESS. A GREEN PAINT DOT INDICATES THE PART HAS PASSED THE TEST.
2. HYPOT 630 VDC 500 MΩ 0.01 SEC MINIMUM, WIRE TO WIRE & HOUSING.
3. ALL TESTS ARE PERFORMED AT ROOM TEMPERATURE.
4. ALL PARTS MUST PASS ALL TESTS.
5. WIRES ARE NOT REQUIRED TO BEND SHARPLY AT EPOXY SEAL SURFACE.
6. WIRE POSITIONING IS APPROXIMATE & VARIABLE.
7. ENDSTRIP BOTH ENDS AS SHOWN FOR 1650-1 ONLY.
8. VOIDS LARGER THAN $\phi .035$ [.89] ARE NOT ACCEPTABLE.
9. REF-OPERATING TEMPERATURE RANGE PER TABLE.
10. DIMENSIONS ARE INCHES [millimeters].
11. PAVE-SEAL CAN BE A BI-DIRECTIONAL HERMETIC SEAL FOR VACUUM AND MOST PRESSURES. FOR PRESSURES ABOVE 150 PSI (10 BAR), CHECK WITH SALES ENGINEERING.
12. ALCOHOL OR FOMBLIN YVAC 3 MAY BE USED TO LUBRICATE O-RINGS FOR HELIUM TESTING.

WIRE LENGTH TABLE

PAVE #	"X"	"Y"	O-RING (ITEM 4)	OP. TEMP. RANGE
1650	48 [1219]	48 [1219]	-215 VITON	-20°C TO 125°C
1650-1	60 [1524]	60 [1524]	-215 VITON	-20°C TO 125°C
1650-2	120 [3048]	60 [1524]	-215 VITON	-20°C TO 125°C
1650-3	168 [4267]	12 [305]	-215 NM304-75	-54°C TO 121°C

5	1	0183	NUT VS15-SS
4	1	SEE TABLE	O-RING
3	A/R	PAVE-Seal 150	EPOXY BLACK
2	9	TT20	CABLE T/C TYPE T #20 TEFLON FEP
1	1	0161	HOUSING VS15L-SS
ITEM	QTY	PART#	DESCRIPTION

ALL DIMENSIONS AND TOLERANCES APPLY TO FINISHED PART IN INCHES
 ALLOWABLE TOLERANCES UNLESS SPECIFIED OTHERWISE: NONE +/-0.5
 .X DECIMAL +/- 0.1 .XX DECIMAL +/- 0.02 .XXX DECIMAL +/-0.005
 ANGLES +/- 1 DEG SURFACE FINISH 128 microinch RMS

PAVE technology co.
 2751 Thunderhawk Court
 Dayton, Ohio 45414-3445
 U.S.A.
 (937)890-1100
 fax (937)890-5165
 www.pavetechnologyco.com

DESCRIPTION **PAVE-Seal® Cable Harnesses**
VS15L-SS-150-9P-TT20-X-Y
 PART NUMBER *SEE TABLE
1650*

REVISION LEVEL **K**
 PROJECTION