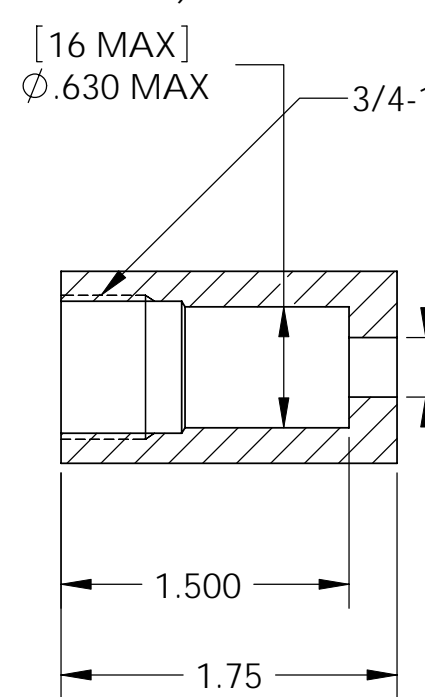
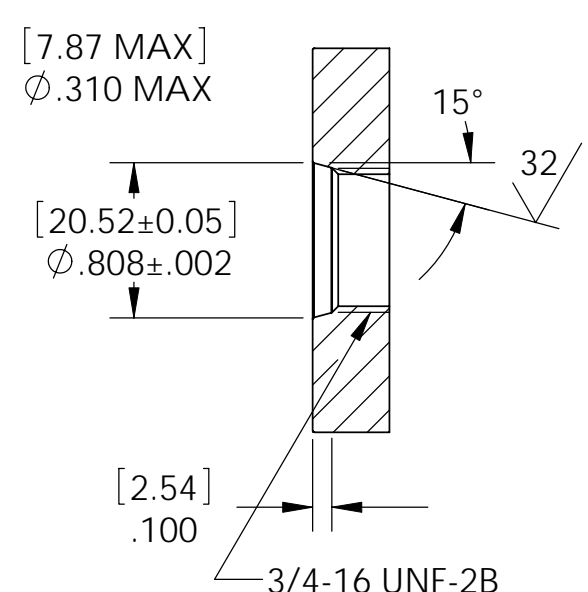


STRAIGHTNESS CHECK TOOL
(SEE NOTE 8)



INSTALLATION PORT



NOTES:

1. HE LEAK TEST VACUUM 10×10^{-6} CC/SEC OR LESS.
2. HYPOT 1000 VDC 500 MEGOHMS MINIMUM 0.01 SECOND MINIMUM ROD TO HOUSING.
3. ALL TESTS ARE PERFORMED AT ROOM TEMPERATURE.
4. ALL PARTS MUST PASS ALL TESTS.
5. VOIDS SMALLER THAN $\phi .035$ [.89] ARE ACCEPTABLE.
6. REF-OPERATING TEMPERATURE -20°C TO 150°C .
7. DIMENSIONS ARE INCHES [millimeters].
8. FINISHED PART MUST THREAD FULLY INTO STRAIGHTNESS CHECK TOOL.
9. PAVE-SEAL CAN BE A BI-DIRECTIONAL HERMETIC SEAL FOR VACUUM AND MOST PRESSURES. FOR PRESSURES ABOVE 150 PSI (10 BAR), CHECK WITH SALES ENGINEERING.

7	1	3438	HOUSING SO12-SS
6	1	-908 BUNA	O-RING -908 BUNA 75
5	2	BRASS NUTS 1/4"	NUT BRASS WAF 7/16 THK 7/32
4	4	BRASS WASH 1/4"	WASHER BRASS ID .260 OD .6875 THK .051
3	1	3149	ROD .25 COPPER HIGH CURRENT
2	A/R	PAVE-Seal 200 HV	EPOXY BLUE
1	A/R	FOMBLIN YVAC 3	LUBRICANT O-RING FOMBLIN GREASE
ITEM	QTY	PART NUMBER	DESCRIPTION

PAVE technology co.
 2751 Thunderhawk Court
 Dayton, OH 45414-3445
 U.S.A.
 tel (937) 890-1100
 fax (937) 8905165
 www.pavetechnologyco.com

DESCRIPTION
 SO12-SS-200-1-.25-22-33mm

PART NUMBER
3132

MATERIAL NOTED

REVISION LEVEL
 H

PROJECTION

ALL DIMENSIONS AND TOLERANCES APPLY TO FINISHED PART IN INCHES.
 ALLOWABLE TOLERANCES UNLESS SPECIFIED OTHERWISE: NONE ± 0.5
 X.X DECIMAL ± 0.1 X.XX DECIMAL ± 0.02 X.XXX DECIMAL ± 0.005
 ANGLES ± 1 DEGREE SURFACE FINISH 128 microinch RMS